



# PPR PIPES & FITTINGS

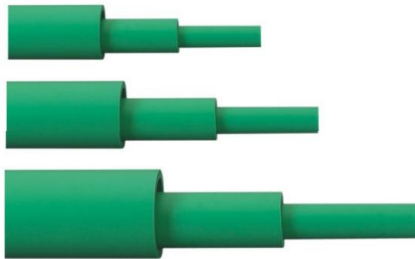
PPR PIPE (PN10) For Cold Water

PPR PIPE (PN20) For Hot Water

Colour- Green

Material – Polypropylene Random Copolymer (PPR)

COMPLY WITH ISO 15874-2, 3 & 5  
SS 375



## DIMENSIONS FOR PPR PIPES PN10

SKU	Diameter D (mm)	Wall Thickness (mm)	WEIGHT (kg)
PIPPR020PN10	20.0~20.3	2.3	0.51
PIPPR025PN10	25.0~25.3	2.8	0.76
PIPPR032PN10	32.0~32.3	3.6	1.23
PIPPR040PN10	40.0~40.4	4.5	1.90
PIPPR050PN10	50.0~50.5	5.6	2.96
PIPPR063PN10	63.0~63.6	7.1	4.82
PIPPR075PN10	75.0~75.7	8.4	6.66
PIPPR090PN10	90.0~90.9	10.1	9.53
PIPPR110PN10	110.0~111.0	12.3	14.32

## DIMENSIONS FOR PPR PIPES PN20

SKU	Diameter D (mm)	Wall Thickness (mm)	WEIGHT (kg)
PIPPR020PN20	20.0~20.3	3.4	0.69
PIPPR025PN20	25.0~25.3	4.2	1.04
PIPPR032PN20	32.0~32.3	5.4	1.70
PIPPR040PN20	40.0~40.4	6.7	2.62
PIPPR050PN20	50.0~50.5	8.4	4.07
PIPPR063PN20	63.0~63.6	10.5	6.42
PIPPR075PN20	75.0~75.7	12.5	9.09
PIPPR090PN20	90.0~90.9	15.0	13.05
PIPPR110PN20	110.0~111.0	18.3	19.20